

# PrimAX

unique,  
efficient and  
user-friendly

Heat circulation pump

Moving people and elements





PrimAX RED T2

## The PrimAX

The PrimAX T2 boasts above-average energy efficiency and, with an EEI from  $\leq 0.14$ , is categorised as "best in class". The clear Biral operational philosophy and various functions, such as the watt and flow rate display ( $\text{m}^3/\text{h}$ ) and the deblocking system, make the pump stand out from the crowd. The unique PrimAX range caters to every need.

### Product description

The Biral PrimAX T2 is a complete circulation pump series with the following features:

- Integrated differential pressure control, which enables continuous adjustment of the pump output according to the current system conditions.
- Display showing the current power input in watts and the flow rate in  $\text{m}^3/\text{h}$ .
- Motor with permanent magnet motor and compact stator housing.

Installing a Biral PrimAX circulation pump significantly reduces energy consumption and improves the system's control behaviour. Furthermore, the flow noise generated in the thermostat valves or similar control valves is reduced.

### Intended use

Biral PrimAX circulation pumps are intended for circulating fluids in the following types of system:

- Heating systems (underfloor heating systems, single-pipe and twin-pipe heating systems)
- Air conditioning systems
- Cold-water systems (cold-water systems are systems in which the ambient temperature is higher than the medium temperature)

### Application areas

- Systems with constant or variable flow rates, which require or benefit from an optimum setting for the operating point.
- Existing systems, in which the differential pressure of the pump is too high when the flow rate requirement is low.
- New systems where the flow rate automatically adjusts to the flow rate requirement without the use of balancing valves or other expensive components.

## Development and assembly

The PrimAX is another Biral in-house development – from construction to assembly to quality control.



### High quality

We are proud of our Swiss production facility in Münsingen, near Bern. As early as the development stage, we constantly take into account customer and market requirements in order to continuously refine our pumps and maximise benefits for our customers.



### Varied range





Biral offers an exceptionally varied range of pumps. Thanks to sophisticated Biral technology, our pumps impress customers with their outstanding energy efficiency and cost-effectiveness. Biral not only stands for a unique product range, but for sustainability too.

# Unique product range

## The exclusive 3 m and 5 m pumps

As an innovative pump manufacturer, we offer our customers a unique range of products. In addition to the standard pumps with a discharge head of 4, 6 and 8 m, Biral is the only manufacturer to feature 3 m, and as a new addition, also 5 m pumps in its product range.

The right pump type for heating systems can be selected using the following table:

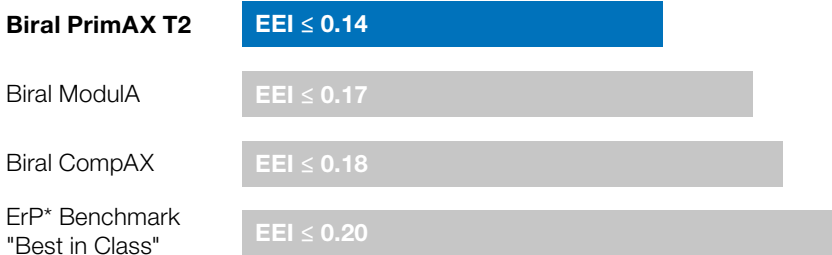
 Floor area	 Radiator heating	 Floor heating	 Pump type
80–120 m <sup>2</sup>	0.3 m <sup>3</sup> /h	1.3 m <sup>3</sup> /h	PrimAX xx-3
80–140 m <sup>2</sup>	0.4 m <sup>3</sup> /h	1.5 m <sup>3</sup> /h	PrimAX xx-4
120–180 m <sup>2</sup>	0.5 m <sup>3</sup> /h	2.3 m <sup>3</sup> /h	PrimAX xx-5
140–200 m <sup>2</sup>	0.6 m <sup>3</sup> /h	2.5 m <sup>3</sup> /h	PrimAX xx-6
200–300 m <sup>2</sup>	0.8 m <sup>3</sup> /h	3.5 m <sup>3</sup> /h	PrimAX xx-8

Note: The values given are approximate values only. Biral is therefore not liable for installation of the incorrect pump design based on this table.

# Efficient pumps

## Currently the most efficient pump with an EEI of $\leq 0.14$

With a top EEI value of  $\leq 0.14$ , Biral is setting new benchmarks with the PrimAX 3 m pump, which is currently the most efficient pump on the market.

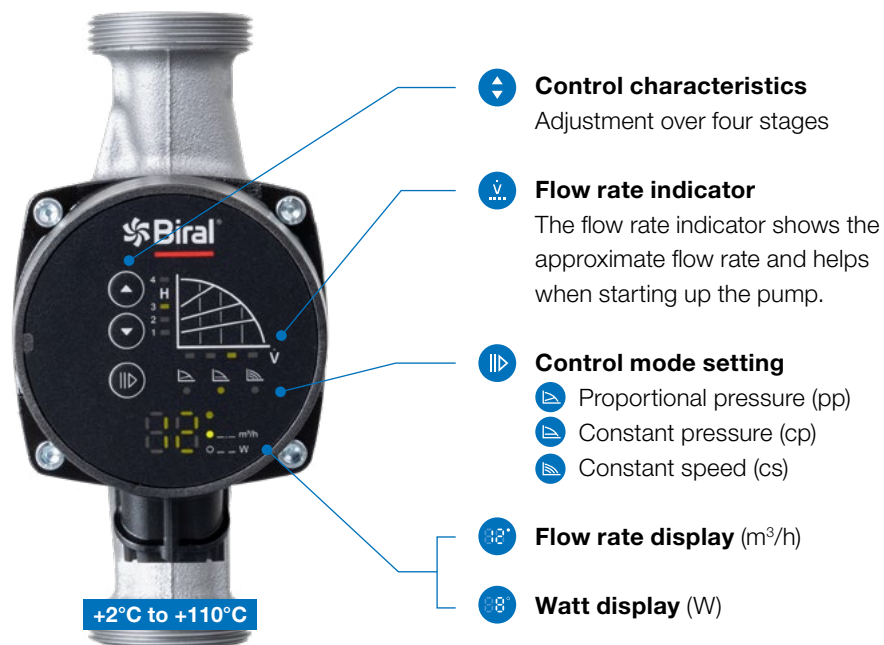


\*ErP: Energy-related products directive

# User-friendly operation

## The Biral operational philosophy

Biral's easy-to-navigate control panel means operating the pump couldn't be simpler.



# Convincing qualities

The PrimAX boasts a wide range of features guaranteed to benefit you during installation and operation.

## Maximum comfort

The pump's maintenance-free design and quiet operation make it stand out from other models.



## Wide temperature range

The PrimAX can be used for medium temperatures ranging from +2°C to +110°C.



## User-friendly operation

Biral's easy-to-navigate control panel means operating the pump couldn't be simpler.



## Angular connector

The angular connector is ideal for use in restricted spaces and is included as standard.



## Easy to install

The Biral connector with screw clamps guarantees quick and easy installation.



## Compact design

With an installed depth of 103.3 mm, the pump is extremely compact and is suitable for installation in tight spaces.



## Maximum efficiency

The PrimAX 3 m pump has an EEI value of  $\leq 0.14$ , setting new benchmarks.





### Automatic bleeding

The pump, specifically the motor compartment, is bled automatically after a short period of operation.



### Active deblocking system

The powerful starting sequence vibrates the pump, releasing any potential dirt deposits after longer periods of inactivity. This ensures a higher level of operational reliability.



### Watt display (W)

Indicates the current operating status and the power input of the pump.



### Flow rate display (m<sup>3</sup>/h)

Shows the flow rate in m<sup>3</sup>/h.



### Unique product range

In addition to the standard pumps with a discharge head of 4, 6 and 8 m, Biral is the only manufacturer to feature 3 m, and as a new addition, also 5 m pumps in its product range.



### Heat insulation shell included

No additional insulation required, because a heat insulation shell is already supplied as standard.



### Magnetite-resistant impeller

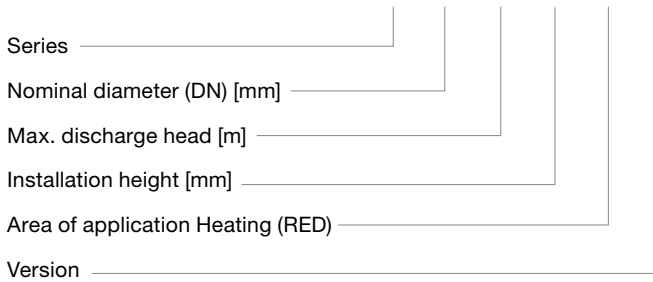
The ceramic shaft and bearings are magnetite-resistant, reducing the risk of blockages due to iron or other magnetic particles.



# Technical information

## Type designation

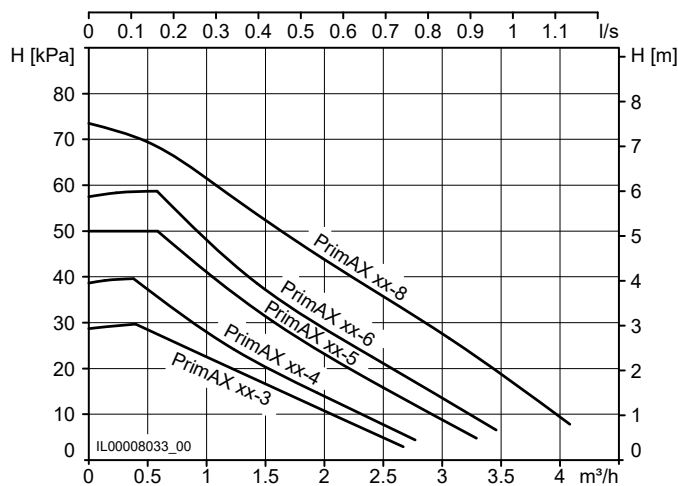
**PrimAX 32 – 6 180 RED T2**



## Technical data

<b>Supply voltage</b>	1×230 V ±10%, 50/60 Hz, PE
<b>Fluid temperature</b>	+2°C to +110°C
<b>Ambient temperature</b>	0°C to +40°C
<b>Noise</b>	Noise pressure level is below 43 dB(A)
<b>Power input</b>	min. 2 W, max. 50 W
<b>Protection class</b>	IP X4D
<b>Winding class</b>	Insulation class F
<b>Temperature class</b>	TF 110 (EN 60335-2-51)
<b>Relative humidity</b>	95%
<b>Motor protection</b>	No external motor protection required
<b>System pressure</b>	Max. 10 bar, 102 m, 1 MPa
<b>Intake pressure</b>	≤ +75°C, 0.5 m +90°C, 2.8 m +110°C, 10.8 m
<b>EMC (electromagnetic compatibility)</b>	EMC directive (2014/30/EC) Standards: EN 55014-1:2017, EN 55014-2:2015

## Operating curves



## Packaging

### Packaging dimensions

L 191 mm × W 126 mm × H 177 mm

### Number of pumps per pallet

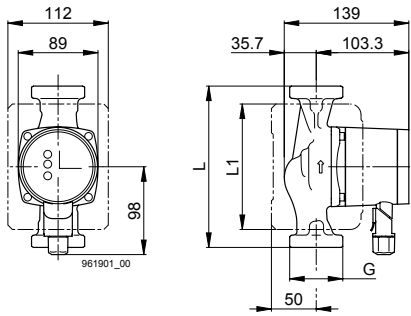
216





 Biral

# Product range



PrimAX ...	Item no.	EAN	DN	H [mWs]	L [mm]	G	L1 [mm]	EEI	Replaces PrimAX ...	Item no.
25-3 180 RED T2	7000001829	7630054958625	25	3	180	1½"	140	≤ 0.14	25-3 180 RED	2205360150
25-4 180 RED T2	7000001830	7630054958632	25	4	180	1½"	140	≤ 0.15	25-4 180 RED	2205370150
25-5 180 RED T2	7000001831	7630054958649	25	5	180	1½"	140	≤ 0.16		
25-6 180 RED T2	7000001832	7630054958656	25	6	180	1½"	140	≤ 0.17	25-6 180 RED	2205380150
25-8 180 RED T2	7000001833	7630054958663	25	7.5	180	1½"	140	≤ 0.18	25-8 180 RED	2205390150
32-3 180 RED T2	7000001834	7630054958670	32	3	180	2"	140	≤ 0.14	32-3 180 RED	2205440150
32-4 180 RED T2	7000001835	7630054958687	32	4	180	2"	140	≤ 0.15	32-4 180 RED	2205450150
32-5 180 RED T2	7000001836	7630054958694	32	5	180	2"	140	≤ 0.16		
32-6 180 RED T2	7000001837	7630054958700	32	6	180	2"	140	≤ 0.17	32-6 180 RED	2205460150
32-8 180 RED T2	7000001838	7630054958717	32	7.5	180	2"	140	≤ 0.18	32-8 180 RED	2205470150
32-3 170 RED T2	7000001839	7630054958724	32	3	170	2"	140	≤ 0.14	32-3 170 RED	2205400150
32-4 170 RED T2	7000001840	7630054958731	32	4	170	2"	140	≤ 0.15	32-4 170 RED	2205410150
32-5 170 RED T2	7000001841	7630054958748	32	5	170	2"	140	≤ 0.16		
32-6 170 RED T2	7000001842	7630054958755	32	6	170	2"	140	≤ 0.17	32-6 170 RED	2205420150
32-8 170 RED T2	7000001843	7630054958762	32	7.5	170	2"	140	≤ 0.18	32-8 170 RED	2205430150
15-3 130 RED T2	7000001844	7630054958779	15	3	130	1"	100	≤ 0.14	15-3 130 RED	2205280150
15-4 130 RED T2	7000001845	7630054958786	15	4	130	1"	100	≤ 0.15	15-4 130 RED	2205290150
15-5 130 RED T2	7000001846	7630054958793	15	5	130	1"	100	≤ 0.16		
15-6 130 RED T2	7000001847	7630054958809	15	6	130	1"	100	≤ 0.17	15-6 130 RED	2205300150
15-8 130 RED T2	7000001848	7630054958816	15	7.5	130	1"	100	≤ 0.18	15-8 130 RED	2205310150
25-3 130 RED T2	7000001849	7630054958823	25	3	130	1½"	100	≤ 0.14	25-3 130 RED	2205320150
25-4 130 RED T2	7000001850	7630054958830	25	4	130	1½"	100	≤ 0.15	25-4 130 RED	2205330150
25-5 130 RED T2	7000001851	7630054958847	25	5	130	1½"	100	≤ 0.16		
25-6 130 RED T2	7000001852	7630054958854	25	6	130	1½"	100	≤ 0.17	25-6 130 RED	2205340150
25-8 130 RED T2	7000001853	7630054958861	25	7.5	130	1½"	100	≤ 0.18	25-8 130 RED	2205350150

# Tools



## Pump replacement

The replacement guide helps you select the right pump when you need a new one.



## PumpSelector

Find the perfect pump for any application.



## eDocuments

eDocuments give you quick and easy access to catalogues, data sheets and manuals.



## BIM/CAD Download Center

Download 2D and 3D files.

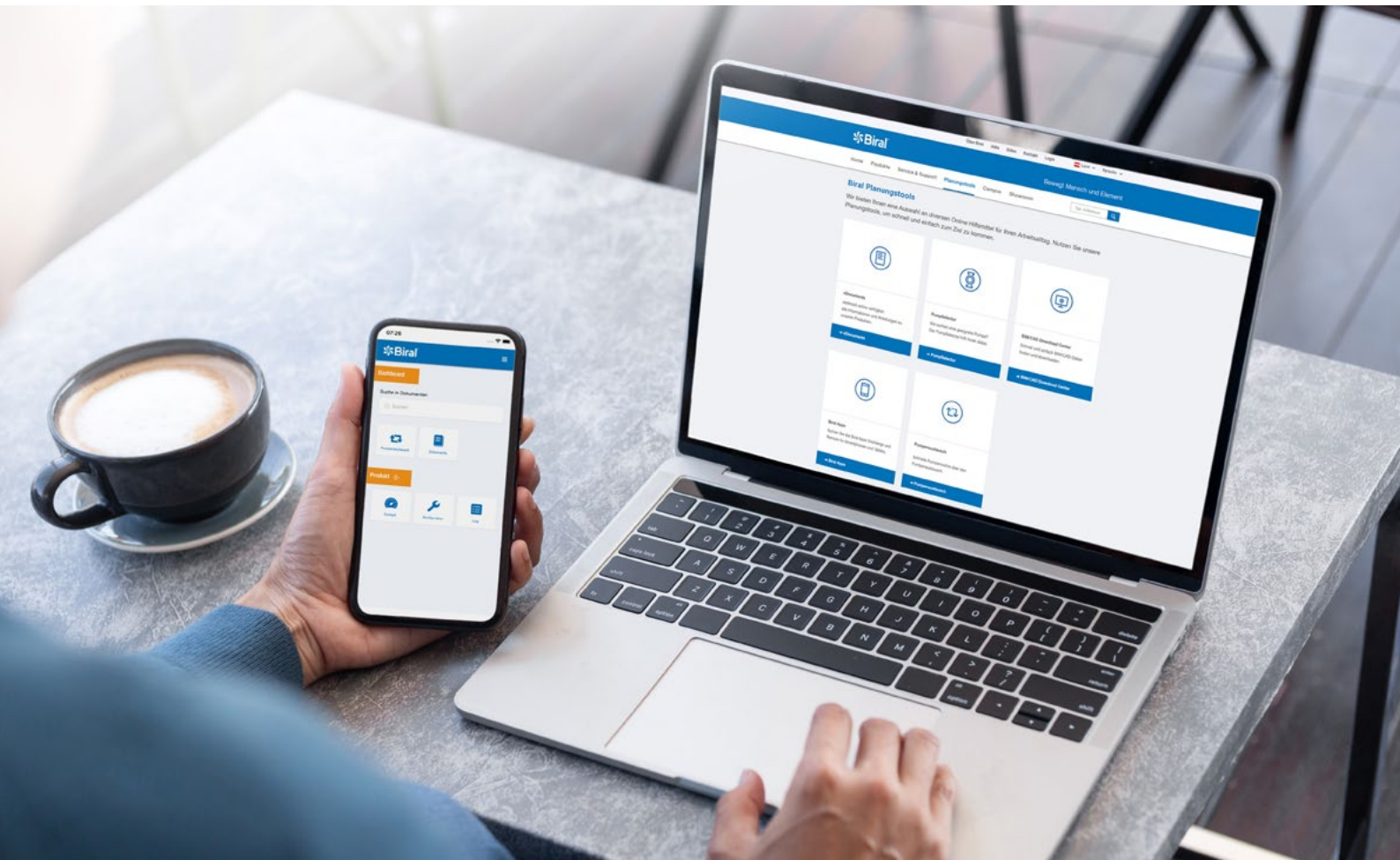


## Biral ONE app

The digital co-worker is available at all times, connects you to Biral products and provides you with the right information.



Download





**Switzerland**

**Biral AG**  
Südstrasse 10  
CH-3110 Münsingen  
T +41 31 720 90 00  
info@biral.ch  
www.biral.eu